

ActTrade ...

Newsletter and Charts

for Friday the 5th of March 2004

The factual information provided in this document should be employed on a hypothetical basis, in real time, until satisfactory results of statistical significance are achieved.

Disclaimer

This report is prepared by Alan Hull an authorised representative of Gryphon Learning, holder of Australian Financial Services Licence No. 246606 and registered training organisation provider No. 21327. It is published in good faith based on the facts known at the time of preparation and does not purport to contain all relevant information in respect of the securities to which it relates (Securities).

Alan Hull has prepared this report for multiple distribution and without consideration to the investment objectives, financial situation or particular needs (Objectives) of any individual investor. Accordingly, any advice given is not a recommendation that a particular course of action is suitable for any particular person and is not suitable to be acted on as investment advice. Readers must assess whether the advice is appropriate to their Objectives before making an investment decision on the basis of this report.

Neither Gryphon Learning Pty Ltd nor Alan Hull warrant or represent the accuracy of the contents of the report. Any persons relying on the information do so at their own risk. Except to the extent that liability under any law cannot be excluded, Gryphon Learning Pty Ltd and Alan Hull disclaim liability for all loss or damage arising as a result of an opinion, advice, recommendation, representation or information expressly or impliedly published in or in relation to this report notwithstanding any error or omission including negligence.

None of Gryphon Learning, its Authorised Representatives, the “Gryphon System”, “Gryphon MultiMedia”, and “Gryphon Scanner” take into account the investment objectives, financial situation and particular needs of any particular person and before making an investment decision on the basis of the “Gryphon System”, “Gryphon MultiMedia” and “Gryphon Scanner” or any of its authorised representatives, a prospective investor needs to consider with or without the assistance of a securities adviser, whether the advice is appropriate in the light of the particular investment needs, objectives and financial circumstances of the prospective investor.

©Copyright Alan Hull 2006

This document is copyright. This document, in part or whole, may not be reproduced or transmitted in any form or by any means, electronic, mechanical, photocopying, recording, scanning or otherwise without prior written permission. Evaluation copies of this document should only be obtained from the author and third party distribution is an infringement of copyright.

Correspondence can be forwarded to ActVest Pty. Ltd. ABN 44 101 040 939 at 53 Grange Drive, Lysterfield, Victoria, 3156, Australia.

Copyright Protection

This document is protected by KEYWORD identification and can be traced. Copyright infringement is a criminal offence.

All charts in this publication were created with Supercharts V4.0, ProSuite 2000i and/or StockDoctor V7.2

ActTrade Rising Equities

<i>Share Code</i>	<i>Closing Price (\$)</i>	<i>Central Cord (\$)</i>	<i>Upper (\$) Deviation</i>	<i>Lower (\$) Deviation</i>	<i>ROAR (%)</i>	<i>Port. Weighting for the 2% risk</i>
ABB	6.000	6.462	6.940	5.983	113	20
ABI	0.395	0.466	0.618	0.335	116	7
ACU	0.340	0.447	0.615	0.315	156	7
ADM	0.088	0.104	0.131	0.078	138	8
AEN	1.220	1.366	1.589	1.144	127	12
AGC	1.660	1.869	2.203	1.558	187	12
AOE	0.330	0.356	0.434	0.278	175	9
ASC	0.097	0.107	0.137	0.077	104	7
ATN	0.283	0.292	0.356	0.261	140	19
AUN	0.740	0.909	1.093	0.725	181	10
AVN	0.026	0.027	0.032	0.023	122	12
AVR	0.470	0.607	0.754	0.509	130	12
AXL	0.091	0.109	0.132	0.087	124	10
AXM	0.225	0.264	0.330	0.198	105	8
AZR	0.160	0.170	0.198	0.143	107	12
BAR	0.115	0.142	0.195	0.089	109	5
BGD	0.235	0.241	0.300	0.181	144	8
BKA	0.485	0.482	0.570	0.408	157	13
BQT	0.480	0.503	0.599	0.408	177	11
CBH	0.240	0.258	0.304	0.213	132	11
CCV	0.255	0.278	0.313	0.244	146	16
CRU	0.710	0.805	0.928	0.687	106	14
CTX	7.220	7.450	8.322	6.577	126	17
DEG	0.600	0.662	0.787	0.588	227	18
ECS	0.075	0.086	0.116	0.056	161	6
EMI	0.145	0.158	0.197	0.118	100	8
EUG	0.155	0.174	0.215	0.133	158	9
FAR	0.087	0.092	0.111	0.072	156	9
FEA	0.355	0.371	0.425	0.316	117	14
FMG	0.610	0.629	0.714	0.585	138	20
GDP	1.070	1.193	1.576	0.810	160	6
GME	0.160	0.182	0.231	0.134	251	7
GPE	0.285	0.199	0.293	0.105	132	4
GRR	0.560	0.605	0.690	0.524	123	15
GTP	2.580	2.654	3.013	2.296	124	15
GUN	0.380	0.419	0.499	0.338	148	10
HAO	0.240	0.289	0.430	0.154	182	4
HDR	1.290	1.463	1.675	1.252	169	14
INL	0.105	0.129	0.161	0.111	157	14
ITC	0.069	0.078	0.095	0.063	163	10
ITE	0.345	0.389	0.468	0.344	136	17
JET	0.340	0.367	0.428	0.307	116	12

LEG	0.135	0.139	0.162	0.118	147	13
LKO	0.054	0.065	0.084	0.054	195	11
MIS	0.650	0.620	0.714	0.526	128	13
MRX	0.160	0.159	0.197	0.120	140	8
MTO	0.270	0.298	0.344	0.256	135	14
MXL	0.145	0.167	0.200	0.153	118	20
NAM	0.580	0.611	0.702	0.521	109	14
NDC	0.385	0.414	0.503	0.326	133	9
NHR	0.450	0.536	0.612	0.475	199	17
NIA	0.089	0.106	0.128	0.089	106	13
NVS	1.790	1.949	2.044	1.854	106	20
NWE	0.062	0.065	0.074	0.055	115	14
NXS	0.200	0.201	0.245	0.157	171	9
OMH	0.850	0.816	0.938	0.699	162	14
OPL	0.210	0.237	0.289	0.184	197	9
PCL	0.155	0.165	0.205	0.125	208	8
PDN	0.105	0.112	0.148	0.076	261	6
PNA	0.185	0.179	0.207	0.151	116	13
PPR	0.950	1.019	1.121	0.917	112	20
PSA	1.360	1.380	1.571	1.189	125	14
PSD	1.000	1.378	1.814	1.061	191	9
RDF	1.520	1.595	1.842	1.349	136	13
RKN	0.880	0.837	0.933	0.741	111	17
SML	0.150	0.179	0.228	0.130	204	7
SMO	0.094	0.104	0.144	0.064	230	5
SPL	0.840	0.946	1.112	0.798	115	13
STU	0.840	0.839	0.949	0.728	106	15
TNC	0.330	0.445	0.564	0.337	294	8
TTR	0.360	0.394	0.468	0.320	120	11
VHL	0.570	0.746	1.088	0.510	199	6
VPE	0.022	0.028	0.035	0.025	142	15
WEB	0.055	0.058	0.075	0.042	112	7

MMA Charts - Rising Equities

ABB Grain ASX

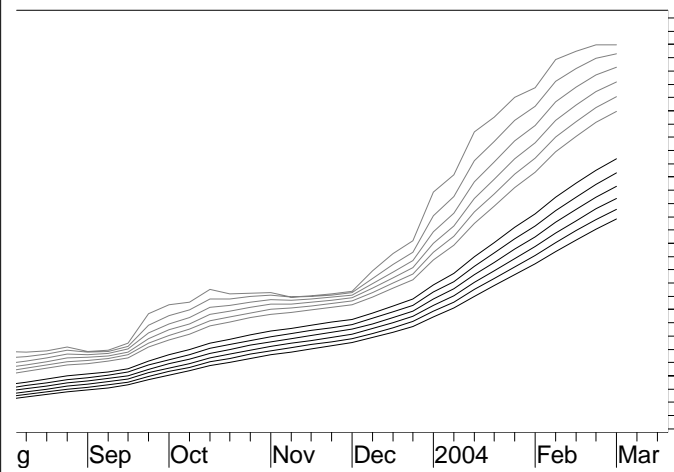
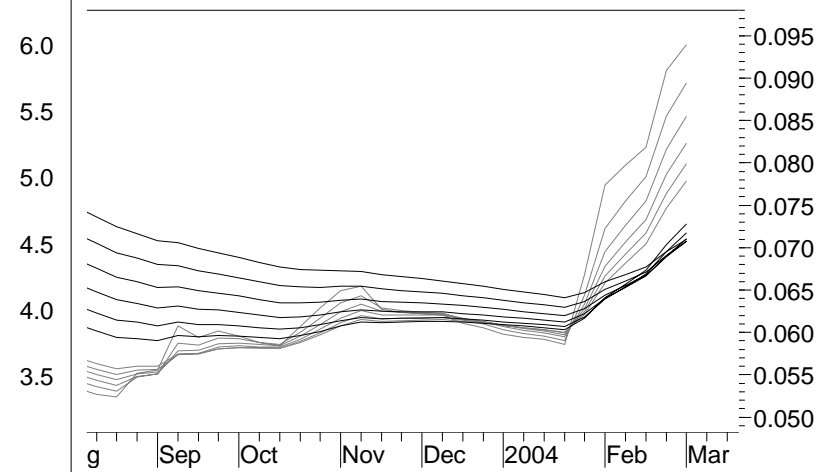
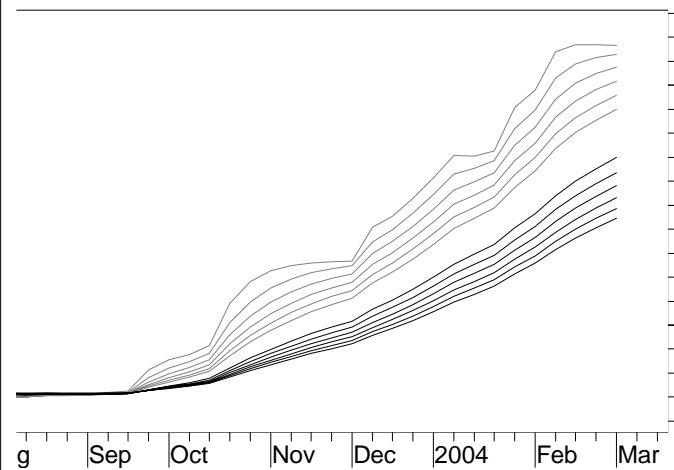


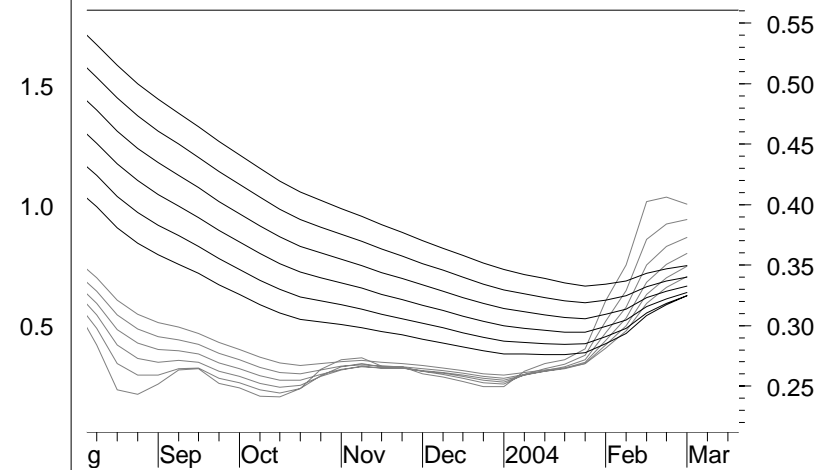
ABB Adultshop SUM



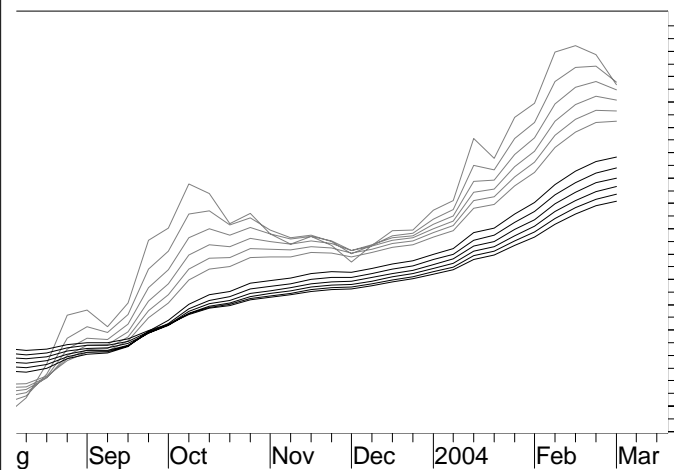
Agincourt SUM



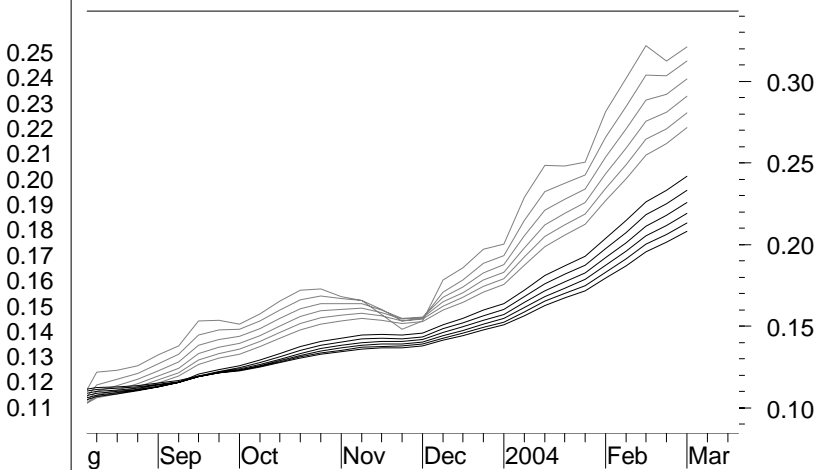
AGC Ambri Ltd SUM



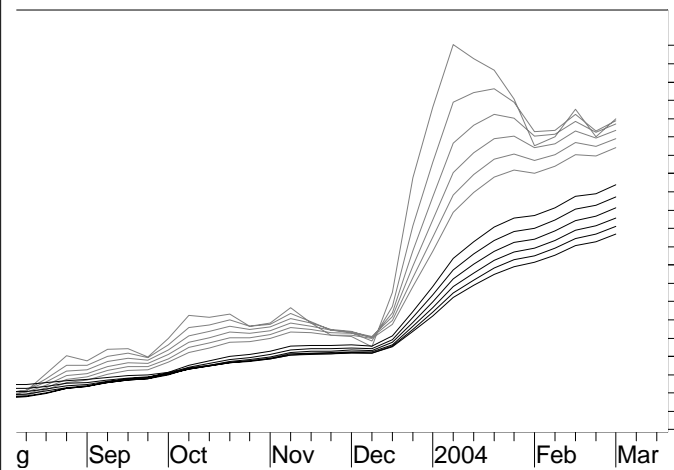
Apex Mins ASX



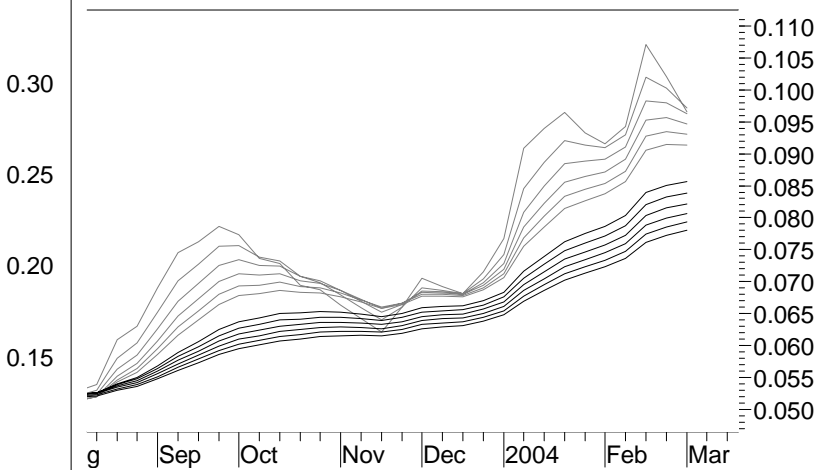
AXM Arrow Engy SUM



Ashburton SUM

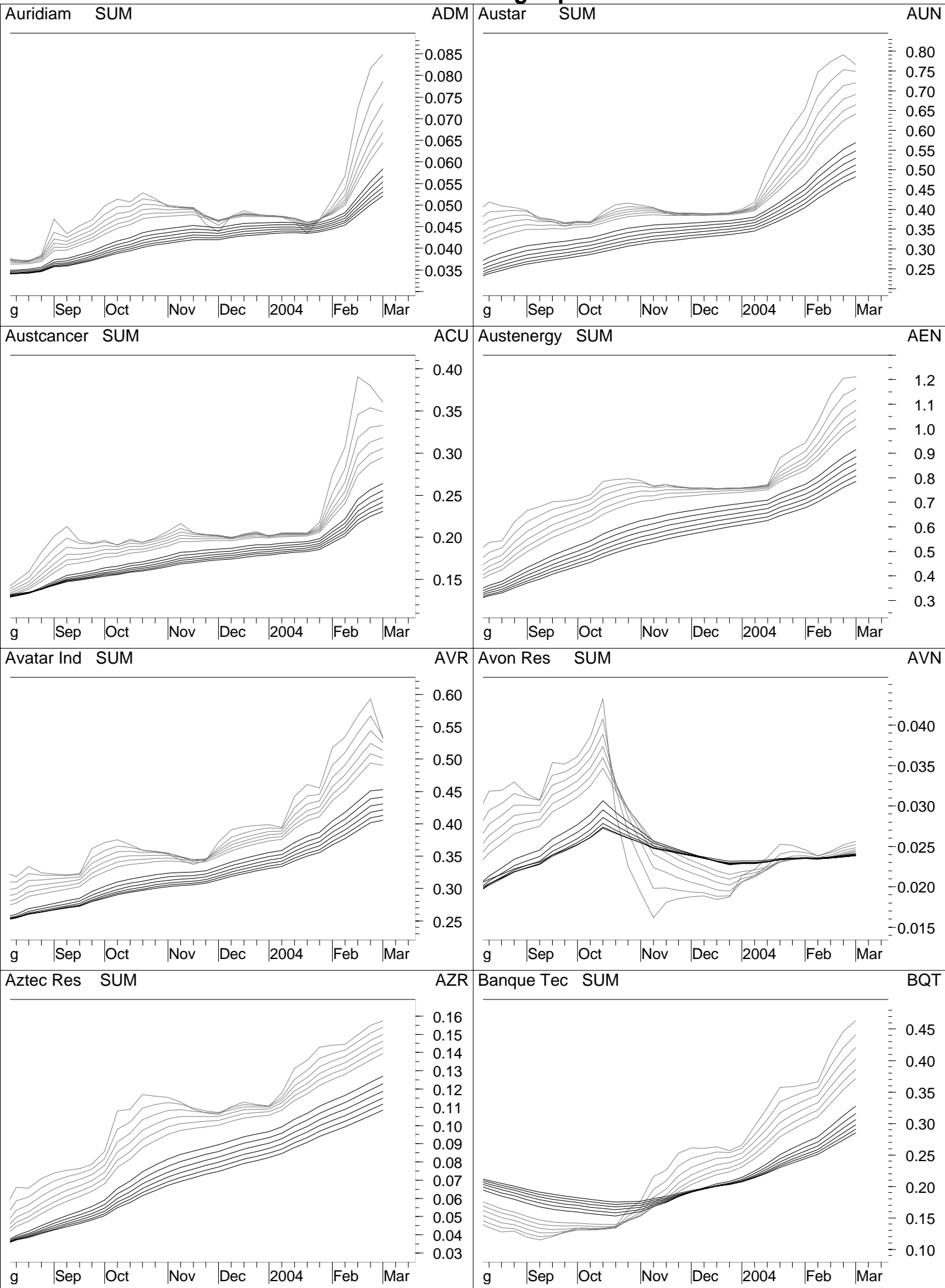


ATN Aucxis SUM



5/03/04

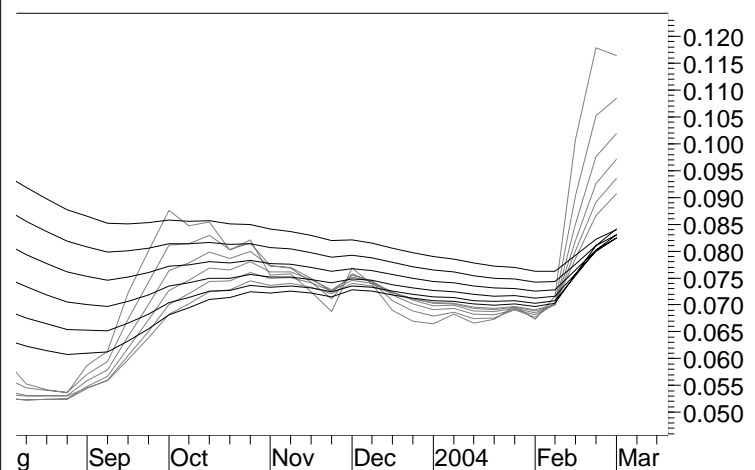
MMA Charts - Rising Equities



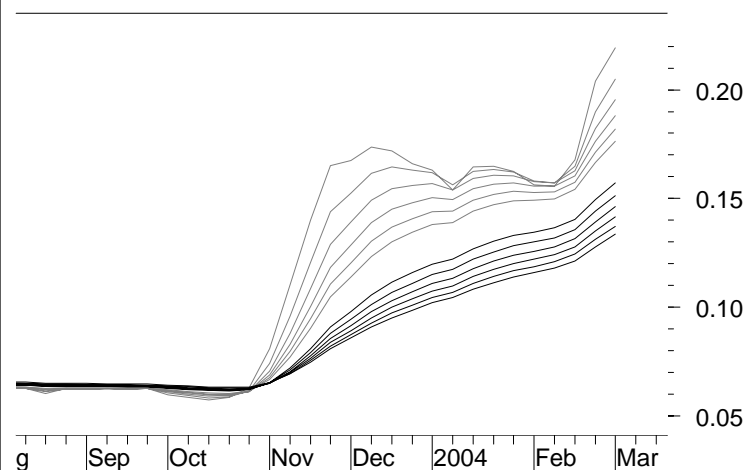
5/03/04

MMA Charts - Rising Equities

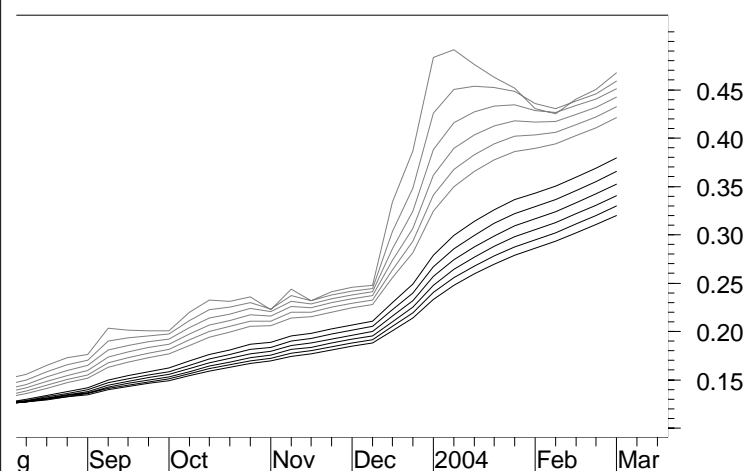
Barra Res SUM



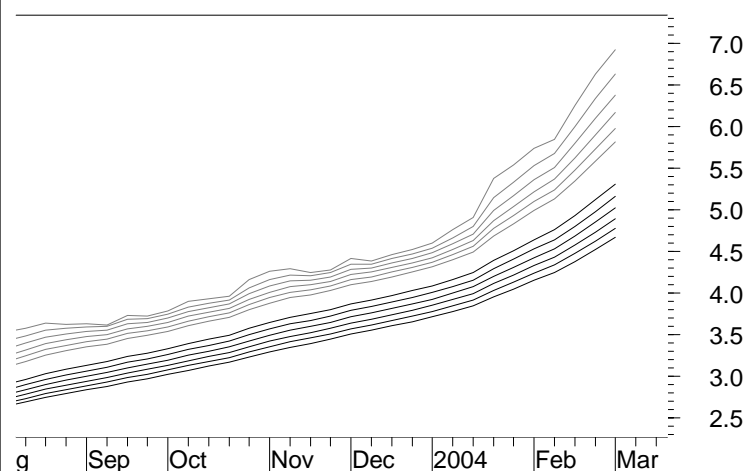
Boulder SUM



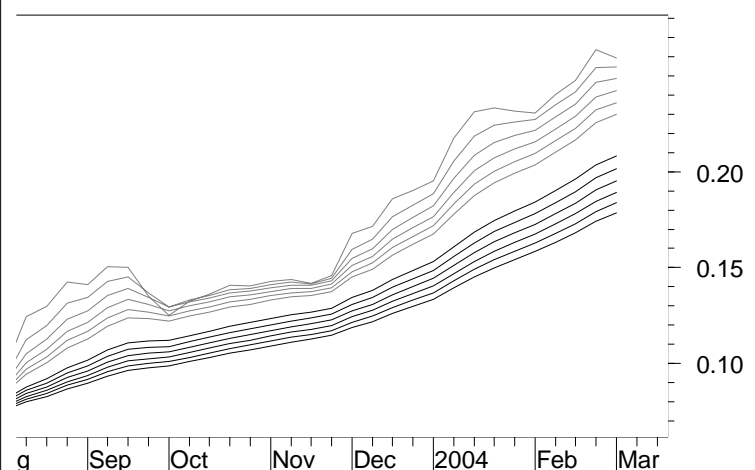
Buka SUM



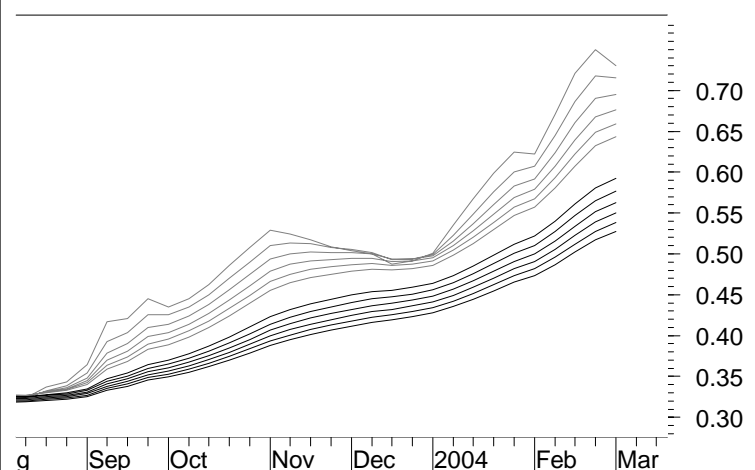
BKA Caltex SUM



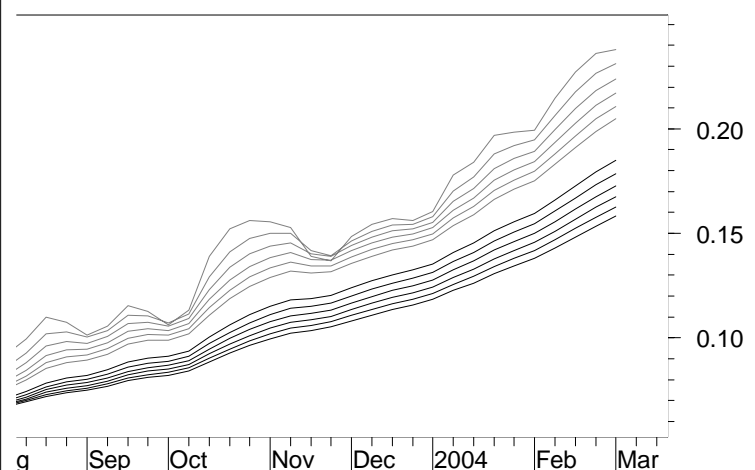
Cash Conv SUM



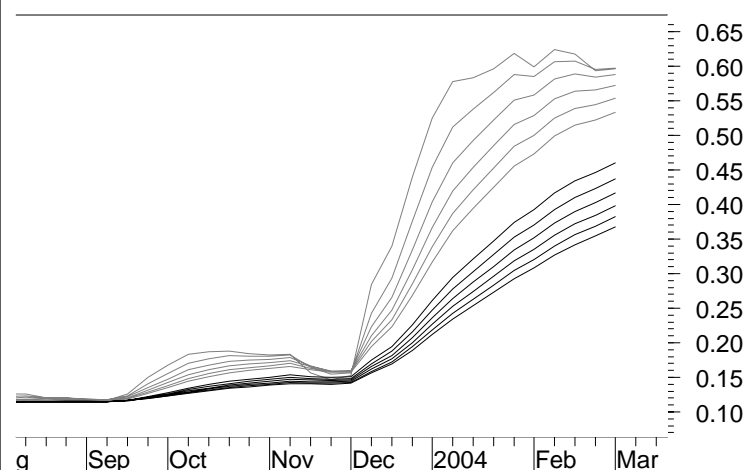
CCV Catalyst SUM



Cons B H SUM



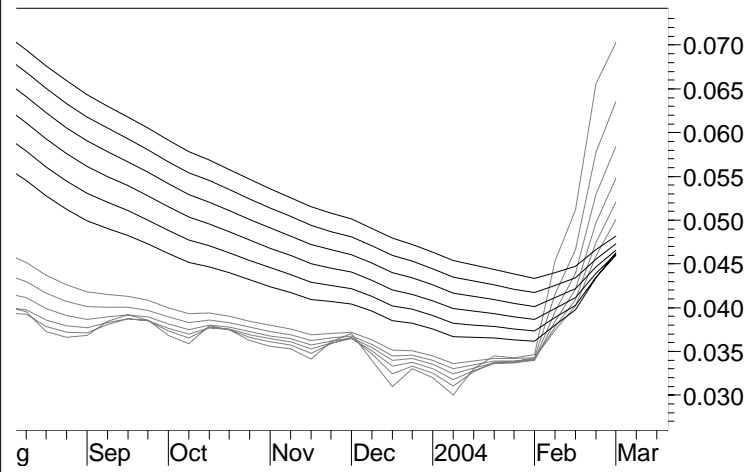
CBH Degrey ASX



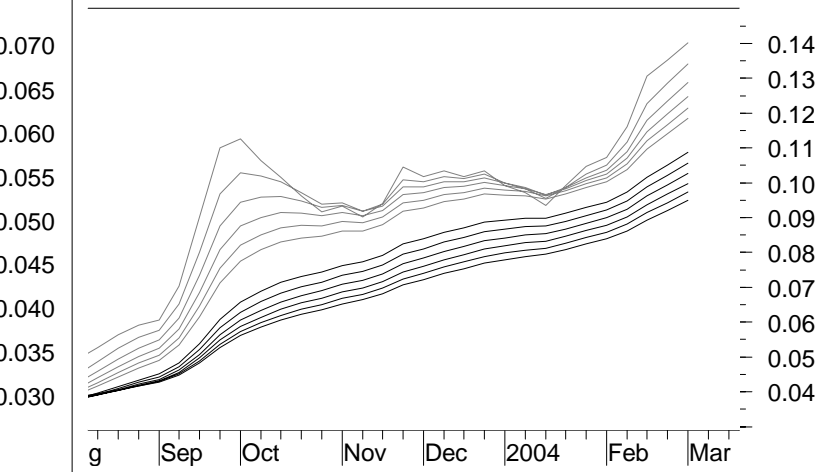
5/03/04

MMA Charts - Rising Equities

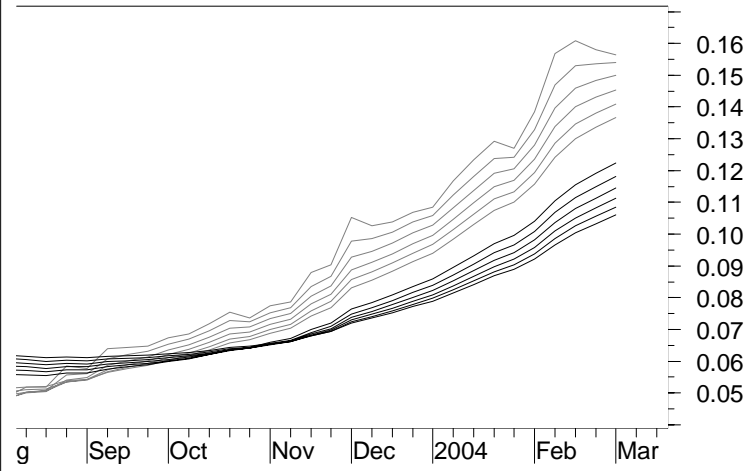
Ecsi Ltd SUM



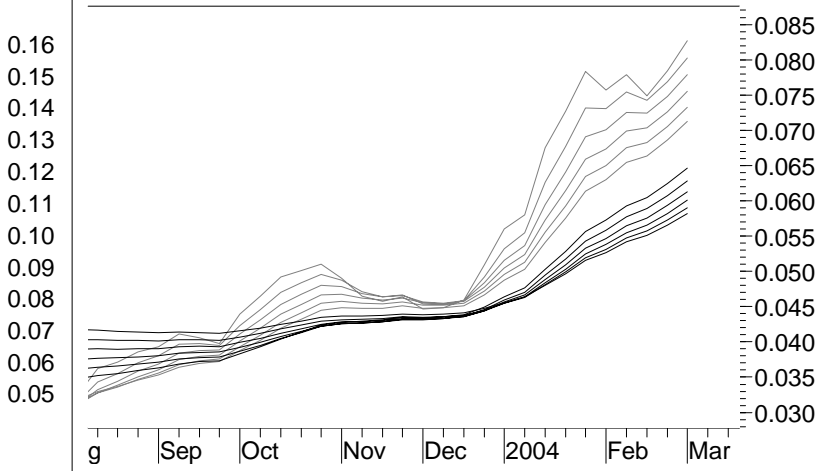
ECS Emitch SUM



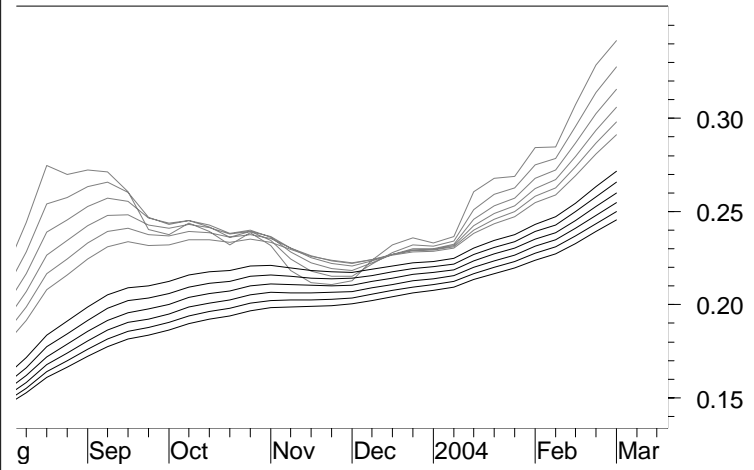
Eurogold SUM



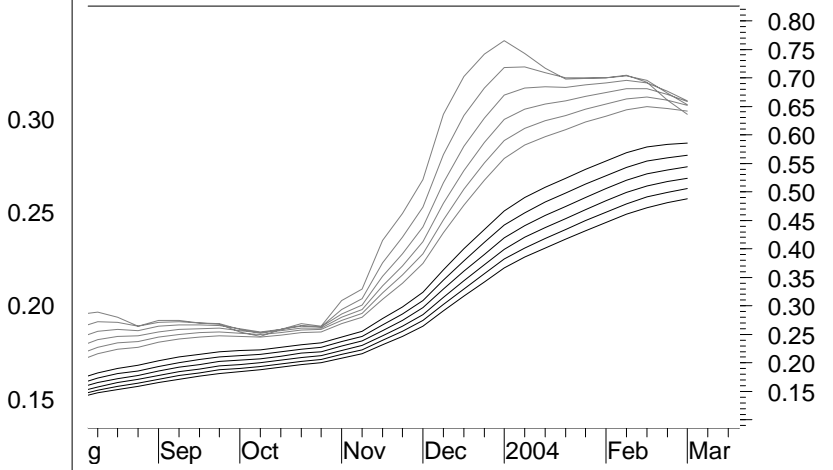
EUG First Aust SUM



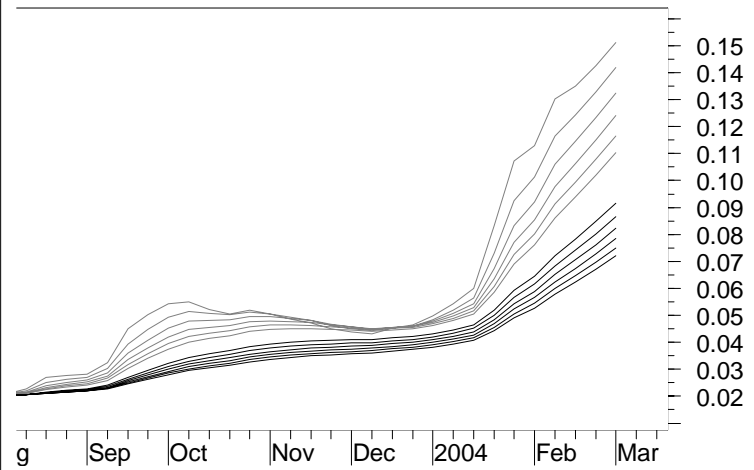
Forest Aus SUM



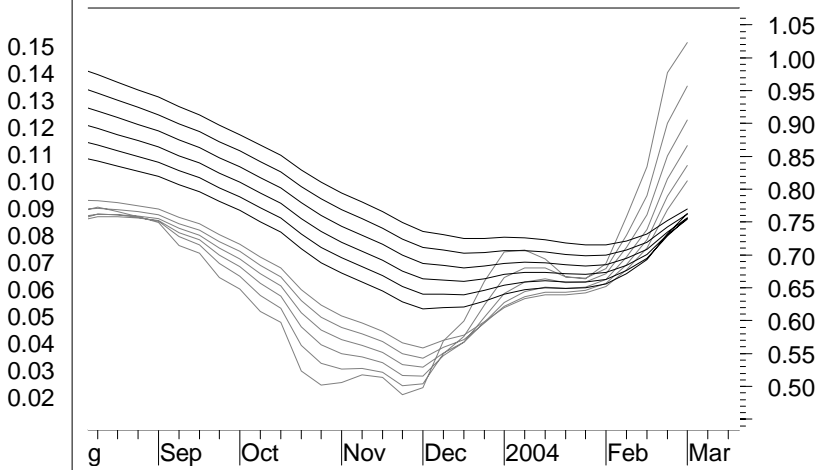
FEA Fortescue SUM



GME Res SUM

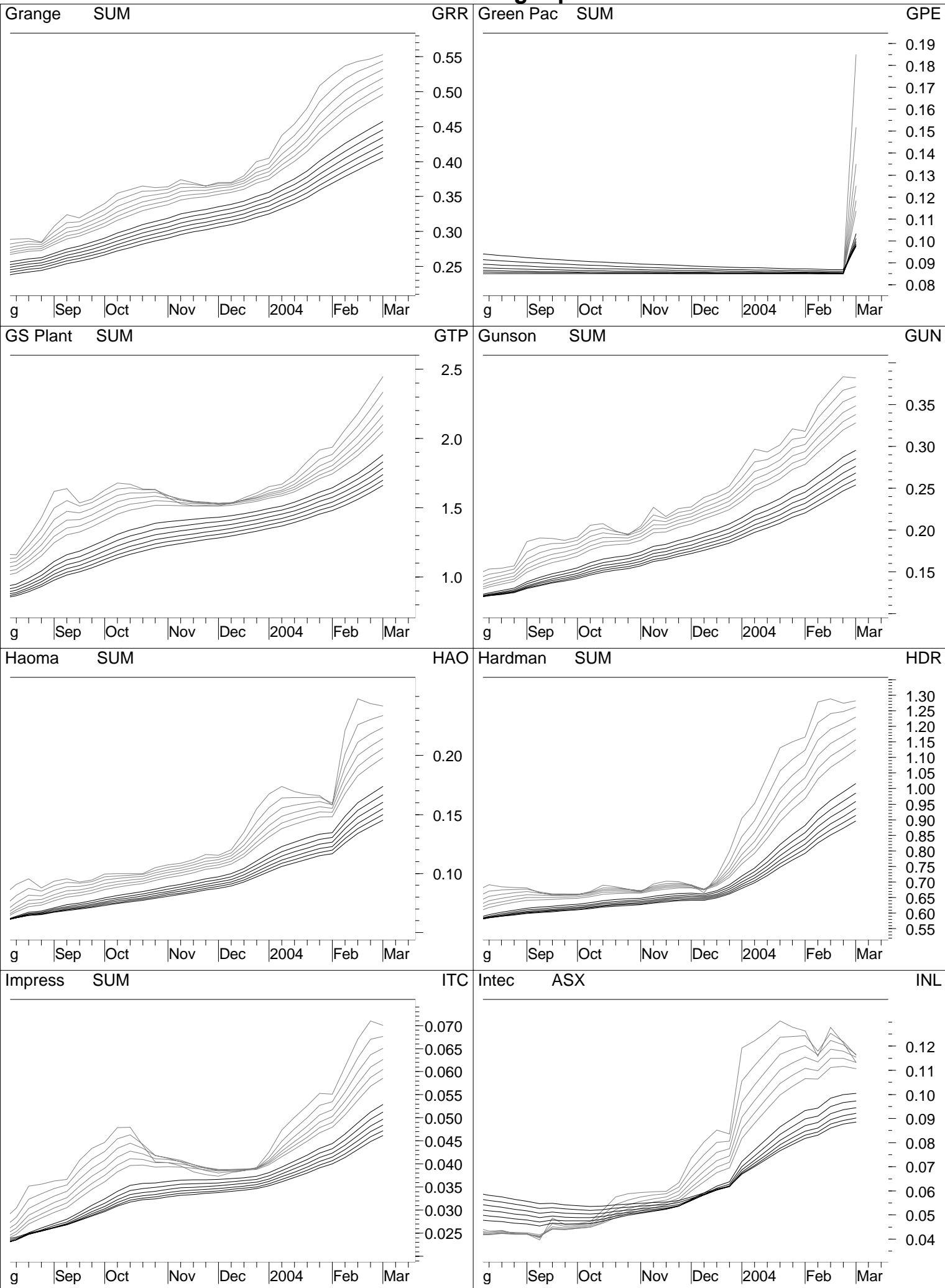


GME Gradipore SUM



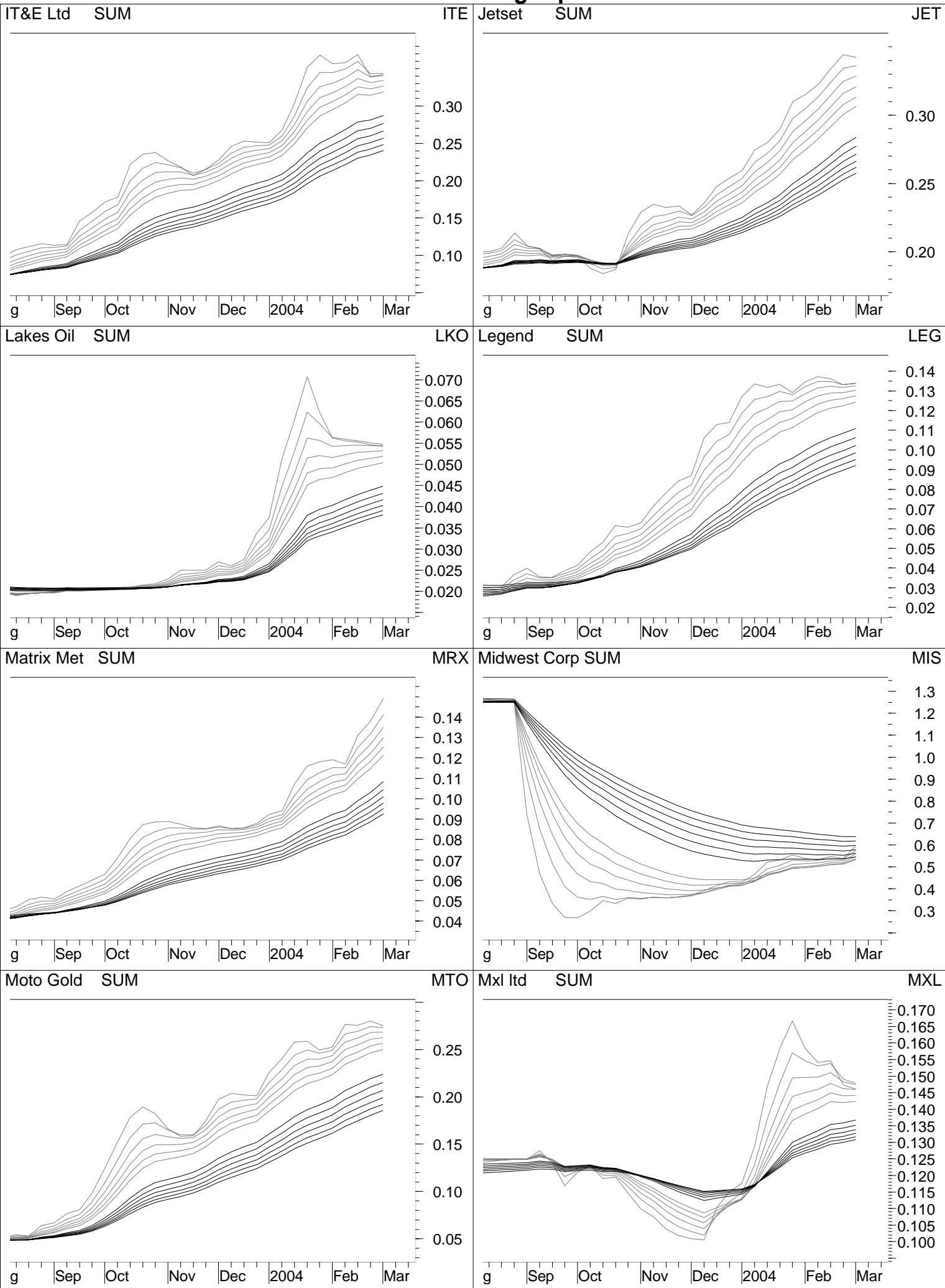
5/03/04

MMA Charts - Rising Equities



5/03/04

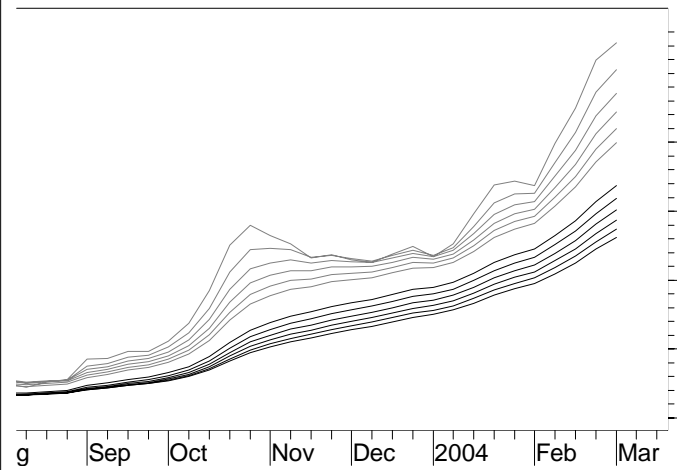
MMA Charts - Rising Equities



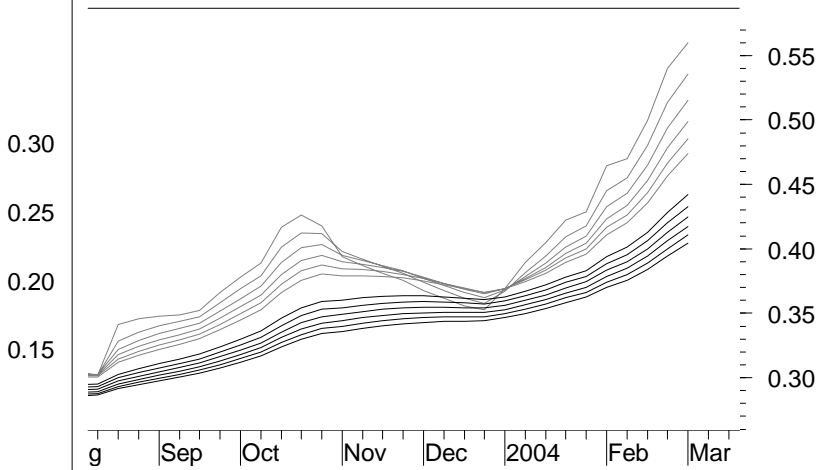
5/03/04

MMA Charts - Rising Equities

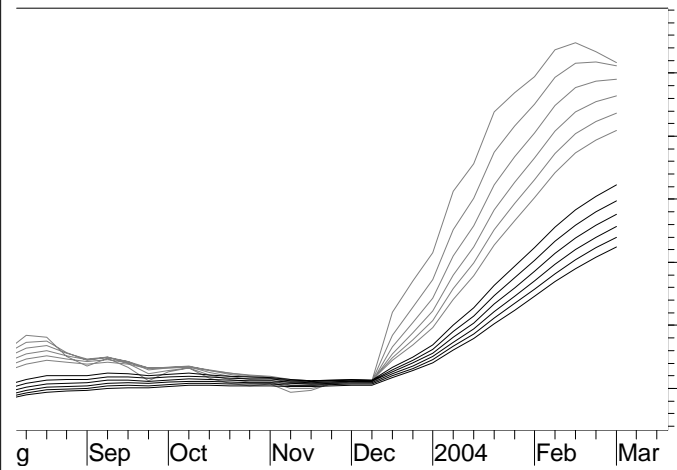
Namakwa SUM



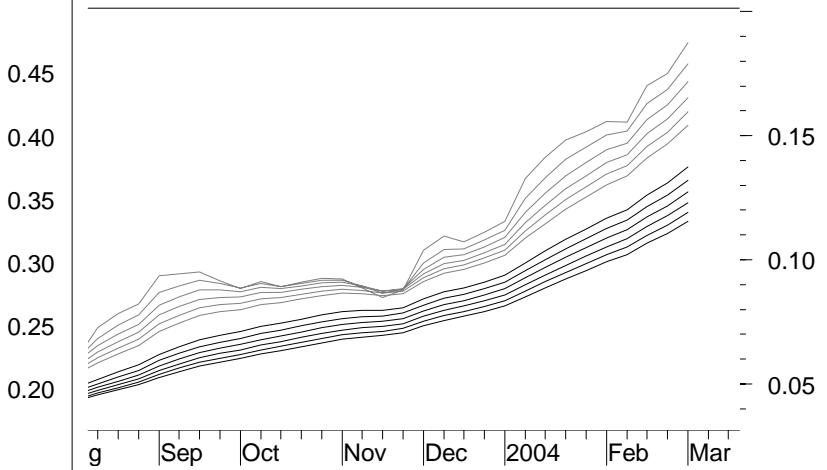
NDC Namoi Cot SUM



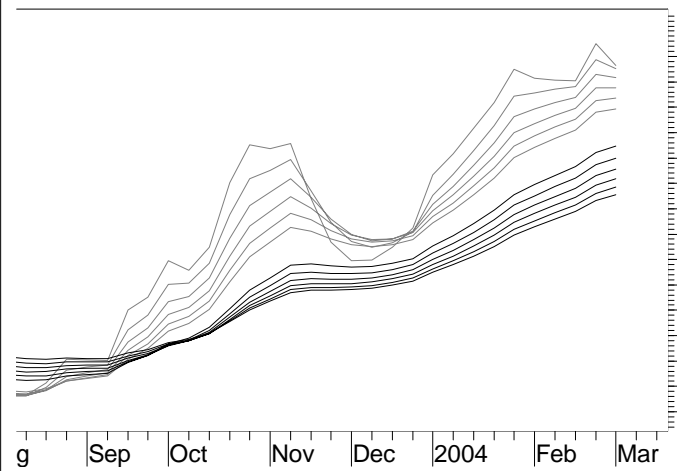
Nat Hire SUM



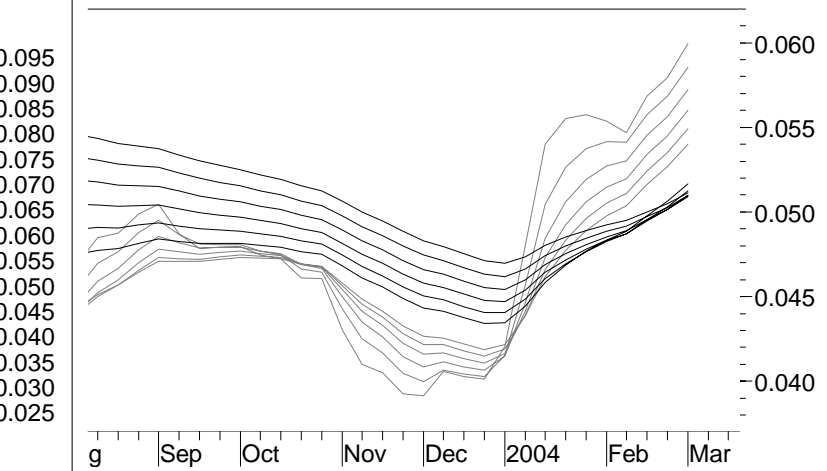
NHR Nexus SUM



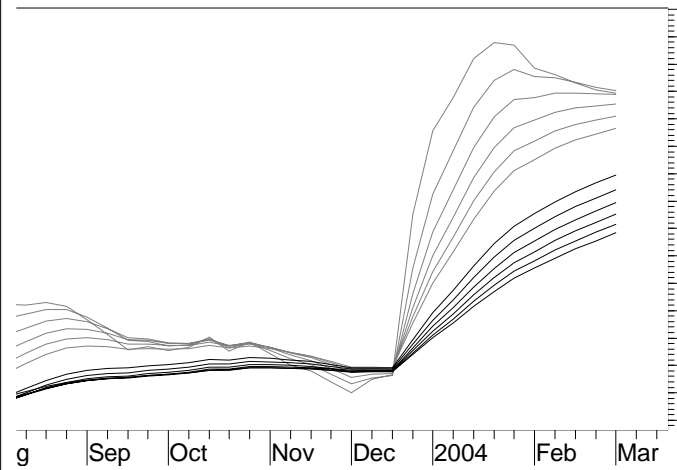
Niagara SUM



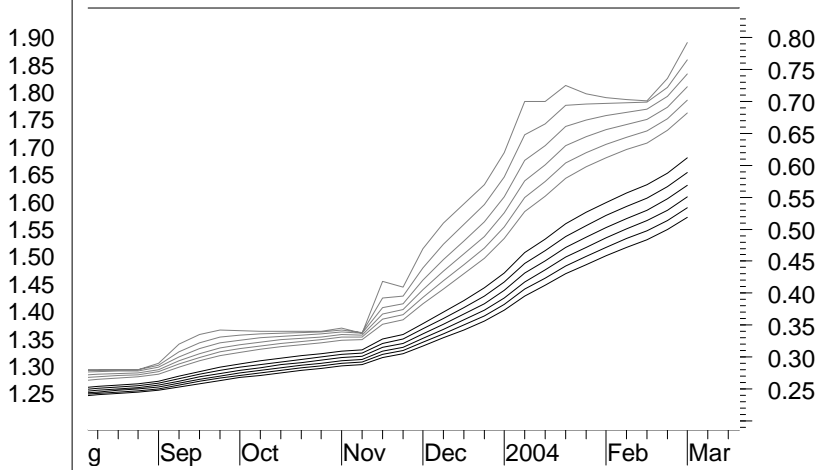
NIA Norwest SUM



Novus SUM

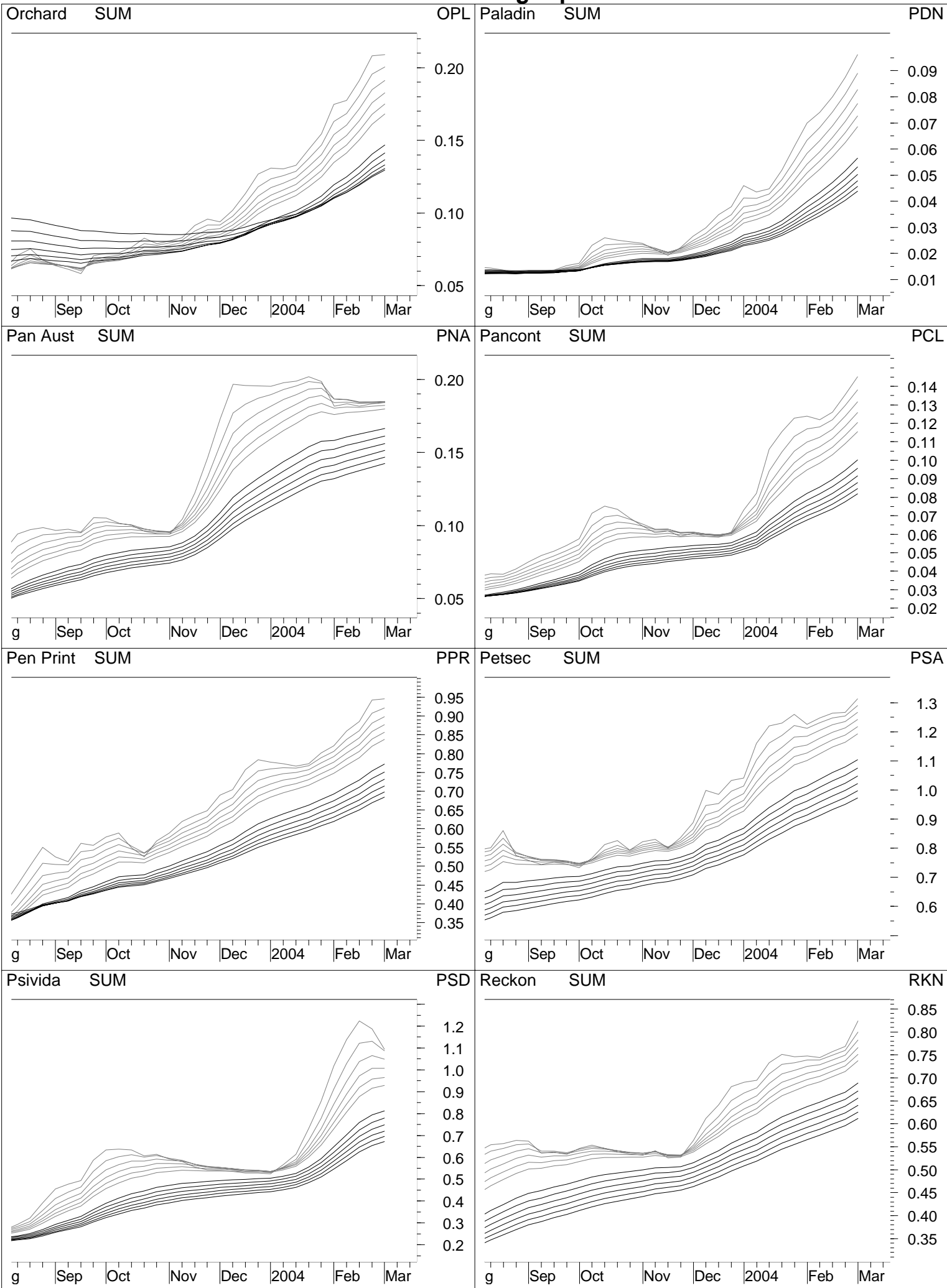


NVS Om Hldngs SUM



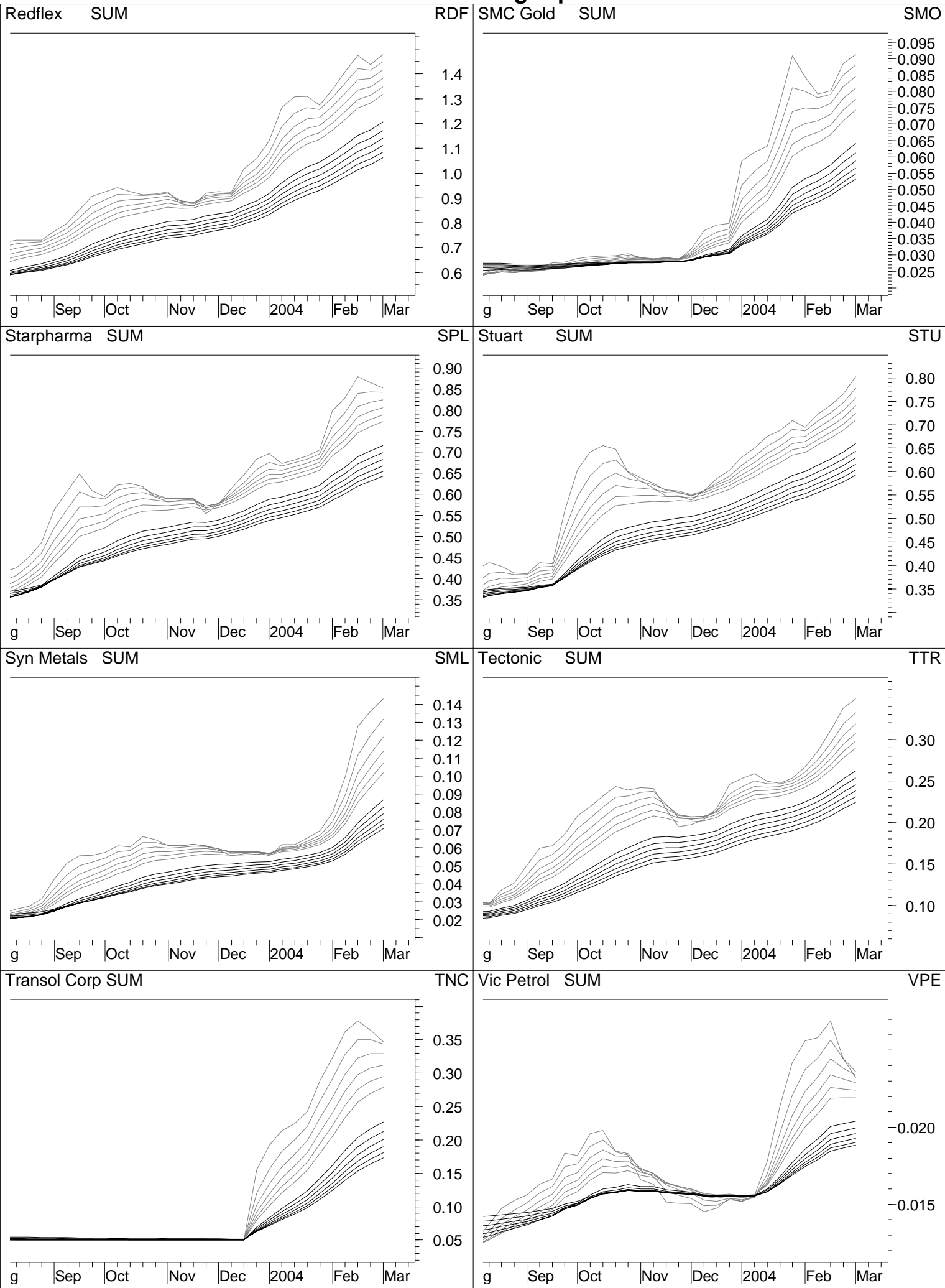
5/03/04

MMA Charts - Rising Equities



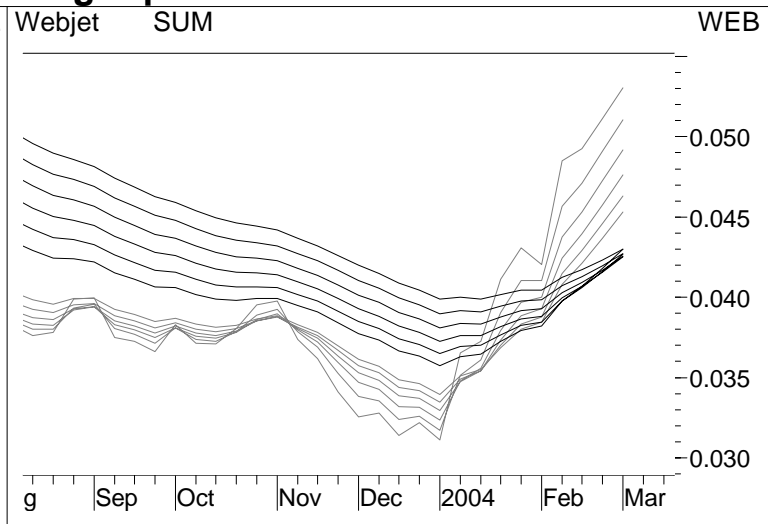
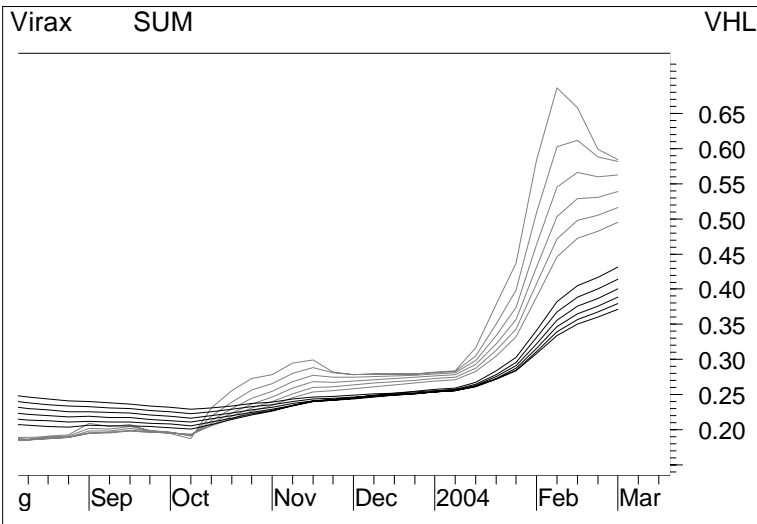
5/03/04

MMA Charts - Rising Equities



5/03/04

MMA Charts - Rising Equities



5/03/04